

# DriTherm®

## MOISTURE RESISTANT, THERMAL INSULATION FOR MASONRY WALLS



### High Quality

Silicone treated Glasswool to provide a premium solution for the lining and strapping of masonry walls.



### Thermal Performance

High thermal performance with a material R-Value of 1.5 m<sup>2</sup>K/W.



### Sustainability

Earthwool® glasswool: DriTherm® masonry slabs are manufactured with ECOSE® Technology which reduces embodied energy and delivers superior environmental sustainability compared to other Glasswool products.



### Fire Performance

Earthwool® glasswool: DriTherm® masonry slabs are non-combustible and classified as Euroclass A1 to BS EN ISO 13501-1 – the highest possible.



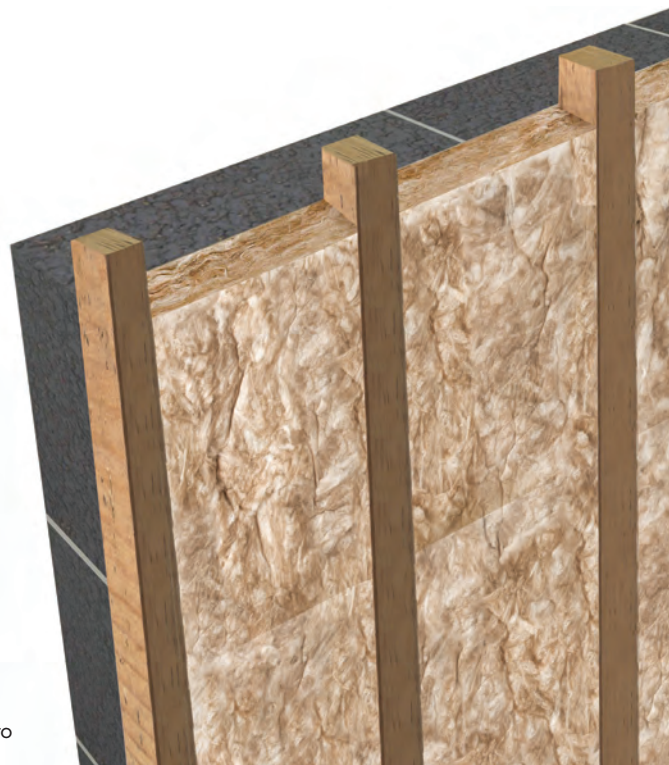
### Water Resistant

Earthwool® glasswool: DriTherm® masonry slabs contain a water repellent additive to ensure that the insulation is not affected by moisture in a masonry wall.



### 50 Year Guarantee

Earthwool® glasswool: DriTherm® masonry slabs are guaranteed for 50 years to resist the passage of water from the outer to the inner leaf.



# DriTherm®

## PREMIUM PRODUCT FOR MASONRY WALLS



### DriTherm® is made using recycled glass and with ECOSE® Technology.

ECOSE® Technology is a revolutionary, more sustainable binder technology born from five years of intensive research and development. ECOSE® Technology is based on rapidly renewable materials instead of petro-based chemicals such as phenol, formaldehyde and acrylics commonly used in traditional Glasswool products. DriTherm® has EUCB and FBS1 certification for the solubility of the Glasswool fibres and contains no added formaldehyde.

DriTherm®	Thickness (mm)	R-Value (m <sup>2</sup> K/W)	Length (mm)	Width (mm)	Pieces per pack	Area per pack (m <sup>2</sup> )	Packs per Supakube	Area per Supakube (m <sup>2</sup> )
	50	1.5	1100	600	8	5.3	32	168.96



For more information visit  
[www.knaufinsulation.co.nz](http://www.knaufinsulation.co.nz)